



27 Ridgeway Avenue

Berry Hill, Coleford, Gloucestershire, GL16 7SF

Offers Over £265,000



VIRTUAL TOUR AVAILABLEVIEWING HIGHLY RECOMMENDED*** Don't miss out on this beautifully presented family home located in a sought after location in Berry Hill. Built in 2021 this three bedroom end of terrace property has been well maintained with an UPGRADED HIGH SPECIFICATION kitchen/dining room with integrated appliances & under unit lighting, spacious lounge and handy downstairs cloakroom. Upstairs are three good sized bedrooms, master bedroom boasts an en-suite and a family bathroom with bath and shower over. Outside there is a flat rear garden with patio for space for seating and lawned area, there is off road parking to the rear of the property accessed via a gate.

Berry Hill is a sought after area in Coleford with many amenities to include a primary and secondary school within walking distance, public houses, social club, convenience stores, pharmacy and takeaways. There is easy access into woodlands with plenty of walks close-by and access to the beautiful Symonds Yat Rock.



Approached via a composite front door into:

Entrance Hallway:

4'5" x 3'9" (1.35m x 1.16m)

Consumer unit, door to cloakroom & lounge, single panelled radiator, power & lighting.

Lounge:

16'0" x 11'9" (4.90m x 3.59m)

Double glazed UPVC window to front aspect, TV point, double panelled radiator, power & lighting, stairs to first floor landing.

Kitchen/Dining Room:

14'11" x 10'5" (4.56m x 3.20m)

An upgraded high specification kitchen with a range of eye level and base units, integrated dishwasher, integrated fridge freezer, integrated washing machine, gas hob with extractor hood, gas oven, stainless steel sink, double glazed UPVC window to rear aspect, double glazed UPVC patio doors to rear garden, space for dining table and chairs, power & lighting, storage under the stairs, double panelled radiator.

Cloakroom:

5'3" x 3'1" (1.62m x 0.94m)

W.C., hand wash basin, extractor fan, lighting.

First Floor Landing:

12'0" x 6'3" (3.66m x 1.91m)

Single panelled radiator, power & lighting, loft access, smoke alarm, doors to bedroom and bathroom, storage cupboard.

Bedroom One:

11'7" x 8'5" (3.54m x 2.57m)

Double panelled radiator, double glazed UPVC window to front aspect, power & lighting, door to en-suite.

En-Suite:

8'5" x 4'5" (2.57m x 1.37m)

W.C., walk in shower, heated towel rail, hand wash basin with wall mounted mirror above, extractor fan, lighting.

Bedroom Two:

10'1" x 8'6" (3.09m x 2.61m)

Double panelled radiator, double glazed UPVC window to rear aspect, power & lighting.

Bedroom Three:

8'8" x 6'2" (2.66m x 1.90m)

Double panelled radiator, double glazed UPVC window to front aspect, power & lighting.

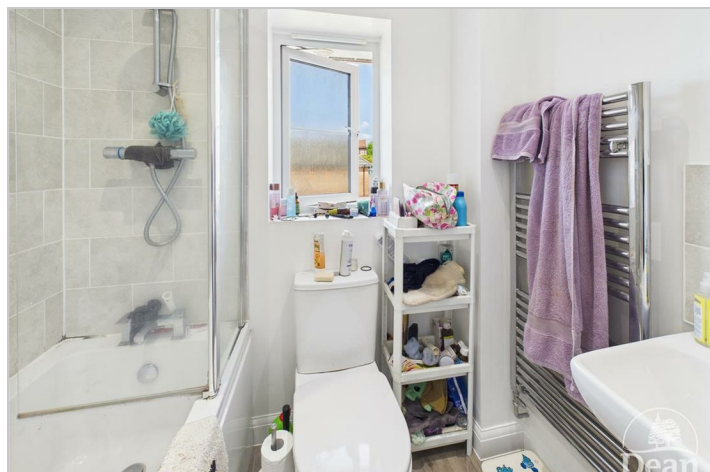
Bathroom:

6'2" x 5'7" (1.90m x 1.71m)

Bath with shower above, W.C., hand wash basin with wall mounted mirror above, frosted UPVC double glazed window, lighting, extractor fan.

Outside:

As you approach the garden via the patio doors in the kitchen, you are met with a sizeable patio area perfect for seating. Beyond this, there is a flat, laid to lawn area enclosed with fencing. There is gated access to rear parking for two vehicles cars and an automatic light.



Consumer Notes: Dean Estate Agents Ltd have prepared the information within this website/brochure with care and co-operation from the seller. It is intended to be indicative rather than definitive, without a guarantee of accuracy. Before you act upon any information provided, we request that you satisfy yourself about the completeness, accuracy, reliability, suitability or availability with respect to the website or the information, products, services, or related graphics contained on the website for any purpose.

These details do not constitute any part of any Offer, Contract or Tenancy Agreement.

Photographs used for advertising purposes may not necessarily be the most recent photographs, although every effort is made to update photographs at the earliest opportunity. Any reliance you place on such information is therefore strictly at your own risk. All photographic images are under the ownership of Dean Estate Agents Ltd and therefore Dean Estate Agents retain the copyright. You must obtain permission from the owner of the images to reproduce them.

Tenanted Property – we are not always able to show the most recent condition of a property due to tenants' privacy and we may choose to show the photographs of the property when it was last vacant to at least allow clients some idea of the internal condition. Therefore, we would of course, urge you to view before making any decisions to purchase or rent the property and before any costs.

Energy Performance Certificates are supplied to us via a third party and we do not accept responsibility for the content within such reports.

PRC Certificates – Some ex-local authority properties have been repaired in recent years using the PRC Scheme wherein a certificate has been produced by a qualified property engineer. This certificate does not imply the suitability for a mortgage approval and you must satisfy yourself of the work carried out that may meet your lenders criteria.

As with leasehold property or new build development sites, you are likely to be responsible for a contribution to management charges and/or ground rent or a contribution to the development service charge. Please enquire at the time of viewing.

You may also incur fees for items such as leasehold packs and, in addition, you will also need to check the remaining length of any lease before you complete a mortgage application form. Please ask a member of our team for any help required before committing to purchase a property and incurring expense.

Road Map



Hybrid Map



Terrain Map



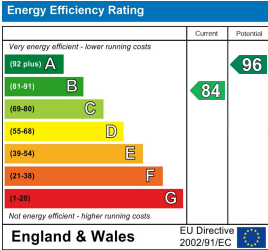
Floor Plan



Viewing

Please contact our Coleford Office on 01594 835751 if you wish to arrange a viewing appointment for this property or require further information.

Energy Efficiency Graph



These particulars, whilst believed to be accurate are set out as a general outline only for guidance and do not constitute any part of an offer or contract. Intending purchasers should not rely on them as statements of representation of fact, but must satisfy themselves by inspection or otherwise as to their accuracy. No person in this firms employment has the authority to make or give any representation or warranty in respect of the property.

